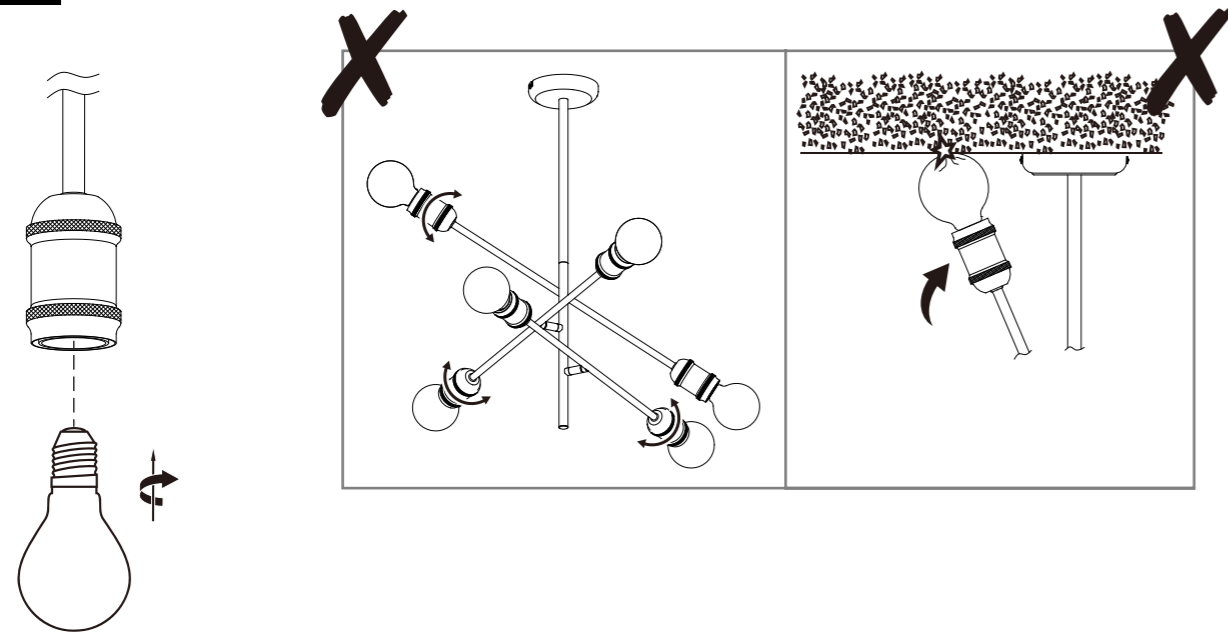


Step 4



Maintenance

This fitting is designed for indoor use only and must be fitted to a DRY SURFACE as any dampness in plaster or paint can damage the finish. **Do not use polish or abrasive cleaner - just a soft dry cloth**

BULB REPLACEMENT

6x Max.15W LED E27 (check bulb dimensions in relation to space available)

Recycling electrical products

Waste electrical products should not be disposed of with household waste. Please recycle where facilities exist. Check with your Local Authority or local store for recycling advice.



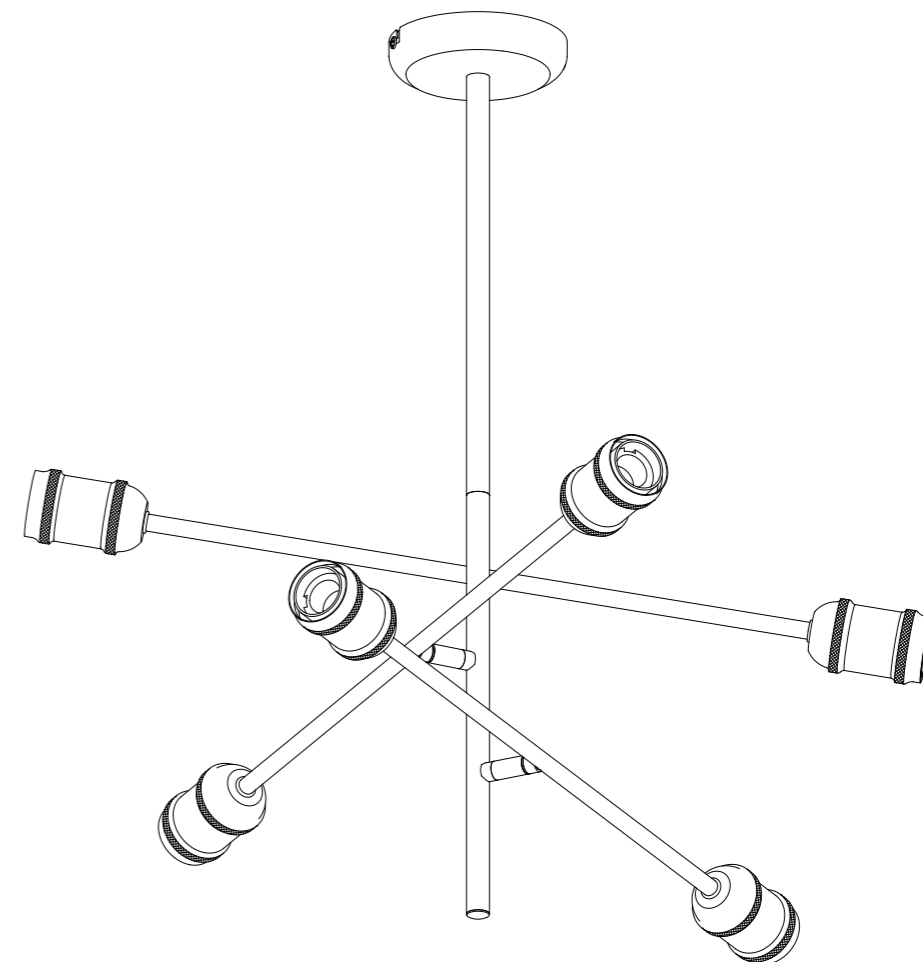
If you require any further assistance, you can contact us on [support@cosylte.co.uk](mailto:support@cosylte.co.uk)

Made in China for COSYLYTE  
Azgen Ltd., 1st Floor, Manor House, Main Road,  
Ryehill, East Yorkshire, England, HU12 9NH  
PreSmart Kft, H-1139 Budapest, Tahi u. 52. 111/4,  
Hungary, EU



Charlton 6 Light Ceiling Light

4897146370229



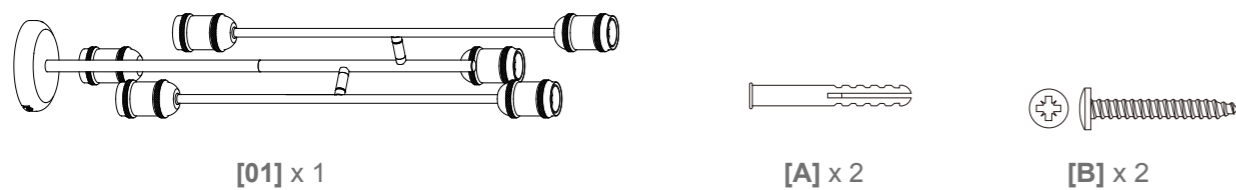
Instruction Manual

## Important

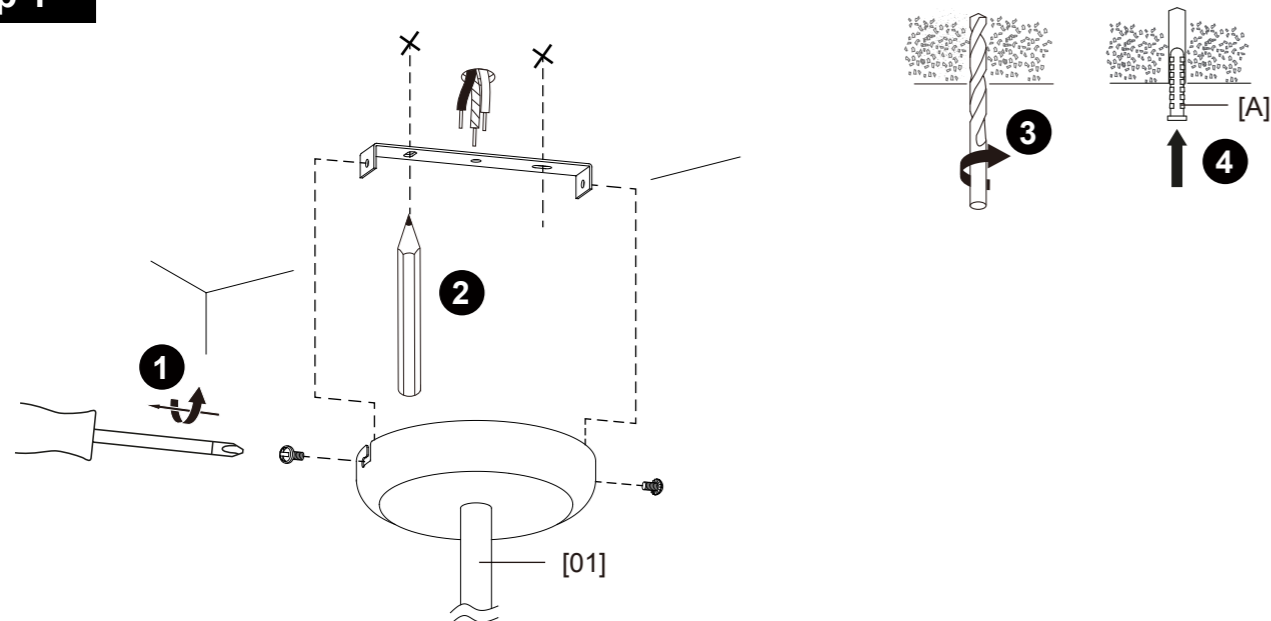
- Read these instructions carefully and remove all the packaging before assembling the unit.
- For your safety, this product must be installed in accordance with local Building Regulations.
- We recommend you employ a qualified electrician and that manufacturer's fitting instructions are followed.
- To prevent electrocution, switch off at the mains supply before installing or maintaining this fitting.
- Take care not to drill into any pipes or mains cables beneath the surface during mounting holes preparation.
- The product must be securely fixed to the mounting surface using the screws and wall plugs supplied.
- Always be sure to use the correct type and wattage of bulbs as indicated on the fitting. Never exceed the wattage stated.
- When changing the bulb, always switch off at the mains and allow the old bulb to cool down before handling. Dispose of used bulbs carefully.
- This fitting is Class I appliance. It should be fitted to a lighting supply (with earth) protected by a 5 amp fuse or equivalent breaker. The product must be earthed.
- The luminaire is designed for indoor use only and not for areas constantly subject to moisture such as bathroom.

## Installation

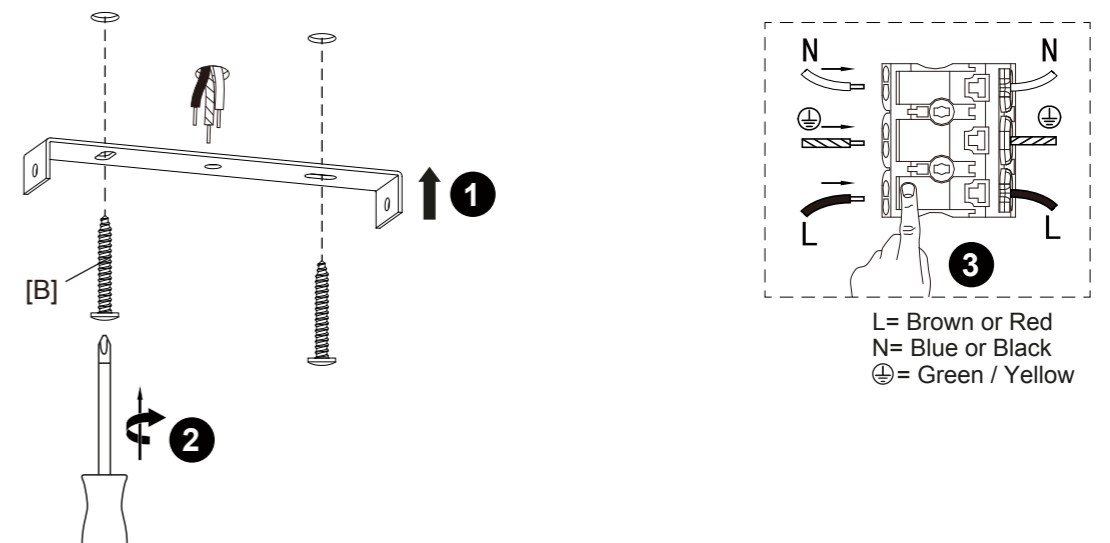
### Supplied Part List:



### Step 1



### Step 2



### Step 3

