

Maintenance

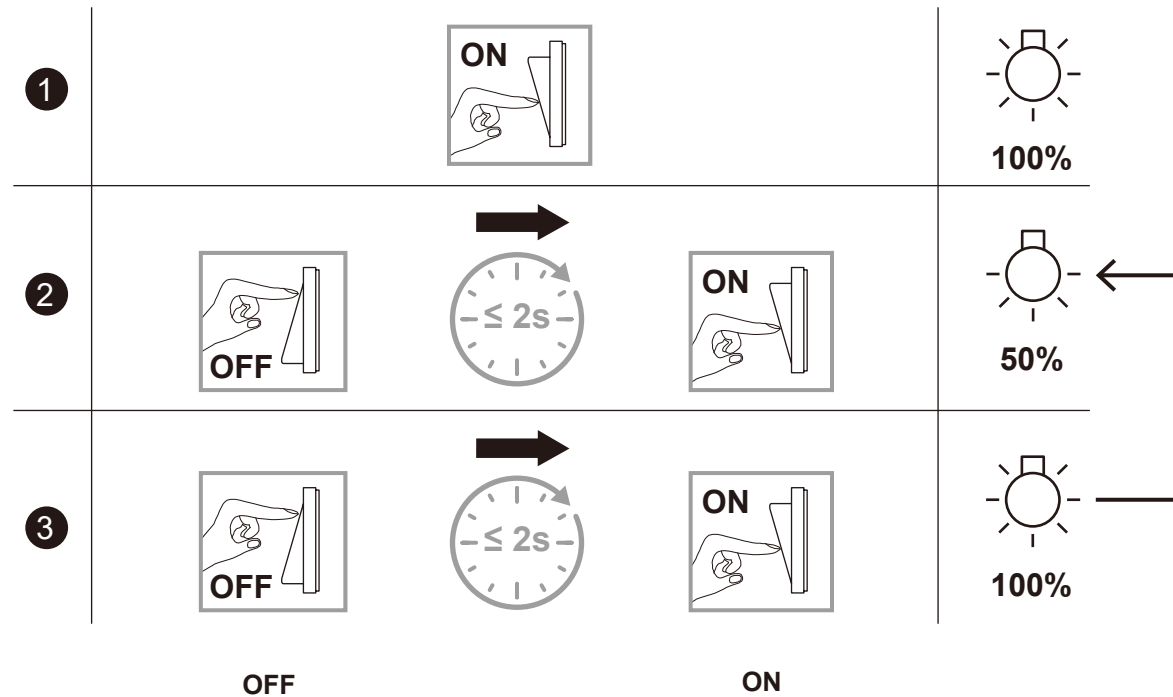
This fitting is designed for indoor use only and must be fitted to a DRY SURFACE as any dampness in plaster or paint can damage the finish. **Do not use polish or abrasive cleaner - just a soft dry cloth.**

**Non replaceable light source. Non replaceable control gear.
This product contains 3 light sources of energy efficiency class E.**



CAUTION: Not compatible with dimmer switches; use with standard ON/OFF switches only.

Dimmable with standard switch



Memorise previous mode

After turn off 5 seconds, the product will return to the previously selected mode.

Recycling electrical products

Waste electrical products should not be disposed of with household waste. Please recycle where facilities exist. Check with your Local Authority or local store for recycling advice.

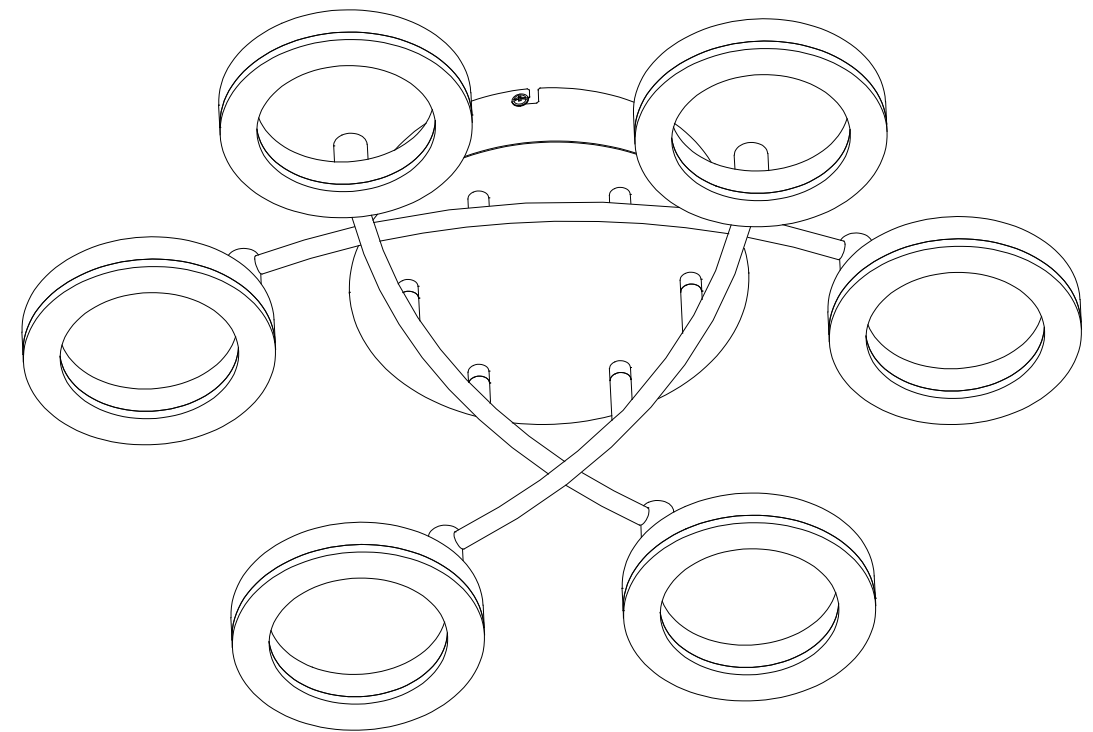


If you require any further assistance,
you can contact us on
support@cosylite.co.uk

Made in China for COSYLYTE
Azgen Ltd., 1st Floor, Manor House, Main Road,
Ryehill, East Yorkshire, England, HU12 9NH
PreSmart Kft, H-1139 Budapest, Tahi u. 52. 111/4,
Hungary, EU



Juni 6 Light LED Ceiling Light



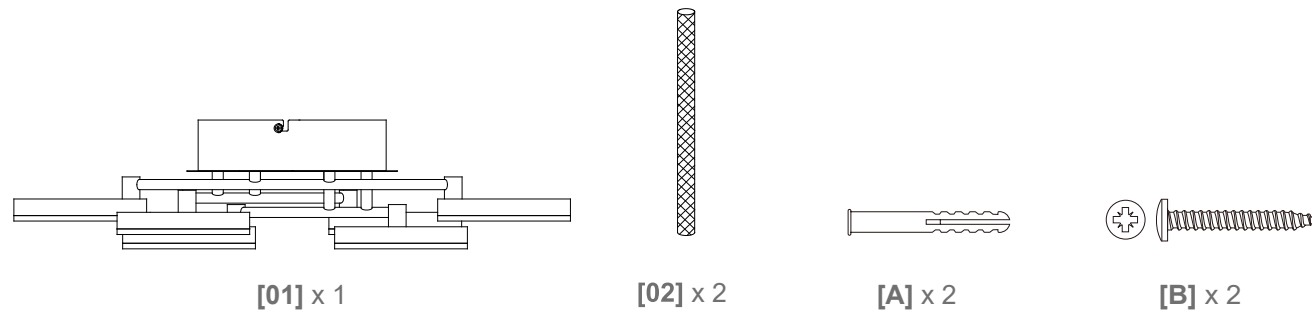
Instruction Manual

Important

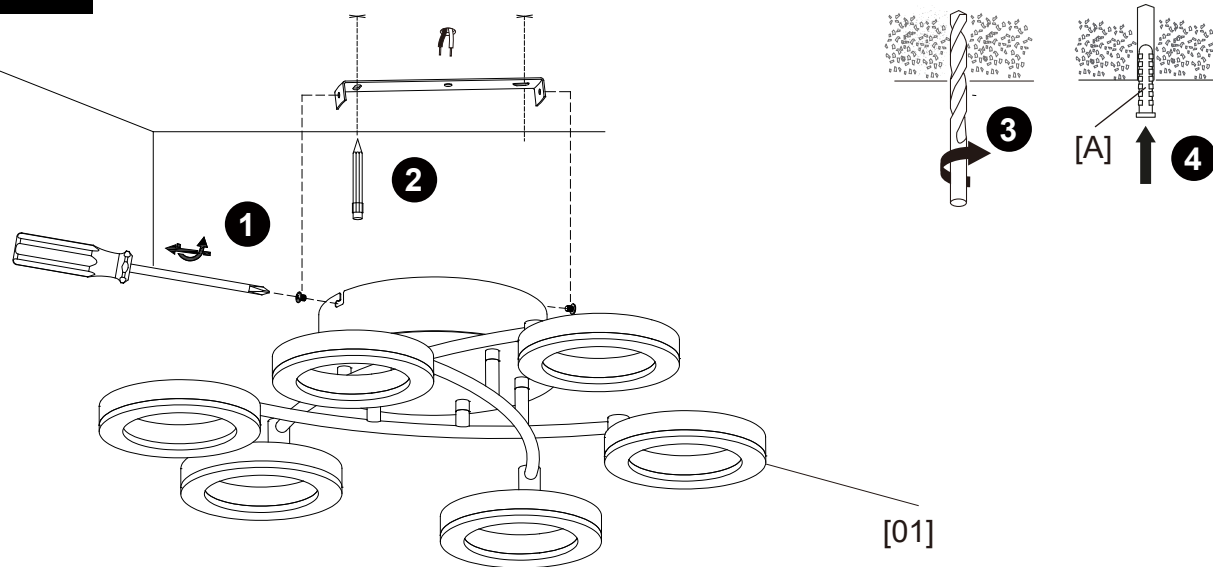
- Read these instructions carefully and remove all the packaging before assembling the unit.
- For your safety, this product must be installed in accordance with local Building Regulations.
- We recommend you employ a qualified electrician and that manufacturer's fitting instructions are followed.
- To prevent electrocution, switch off at the mains supply before installing or maintaining this fitting.
- Take care not to drill into any pipes or mains cables beneath the surface during mounting holes preparation.
- The product must be securely fixed to the mounting surface using the screws and wall plugs supplied.
- Do not stare at operating light source.
- This fitting is Class II appliance. The product must not be earthed. If there are any incoming earth cables, they must be joined together and connected to a separate terminal block which is then well insulated with good quality insulation tape. This is to ensure earth continuity throughout your property.
- The luminaire is designed for indoor use only and not for areas constantly subject to moisture such as bathroom.

Installation

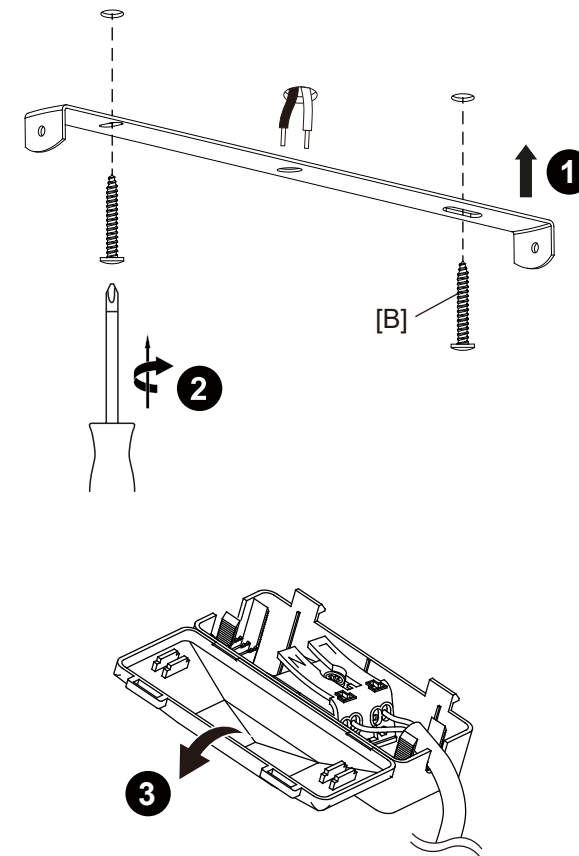
Supplied Part List:



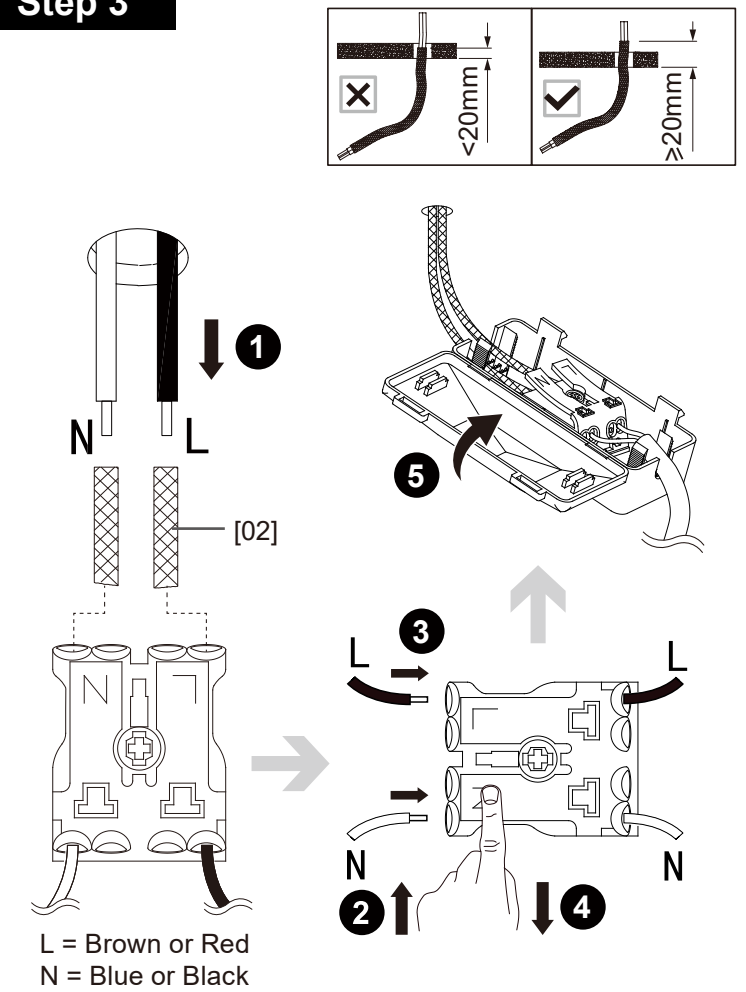
Step 1



Step 2



Step 3



Step 4

